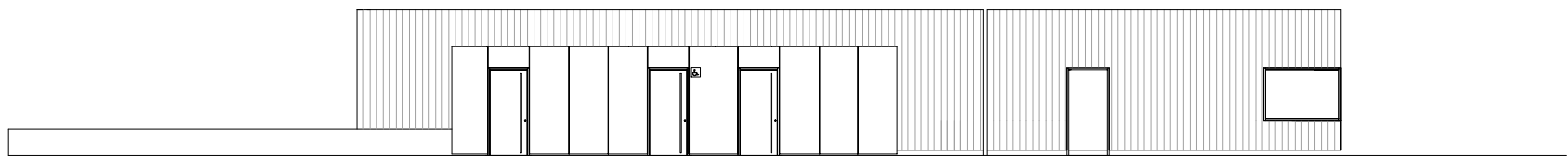
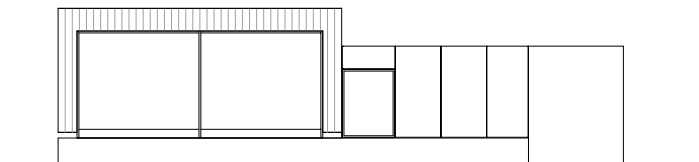


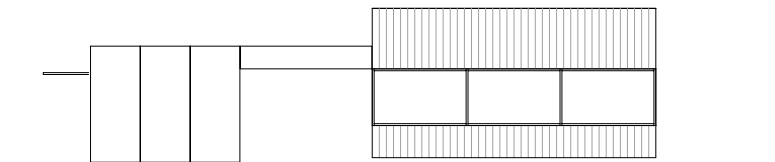
OSTANSICHT



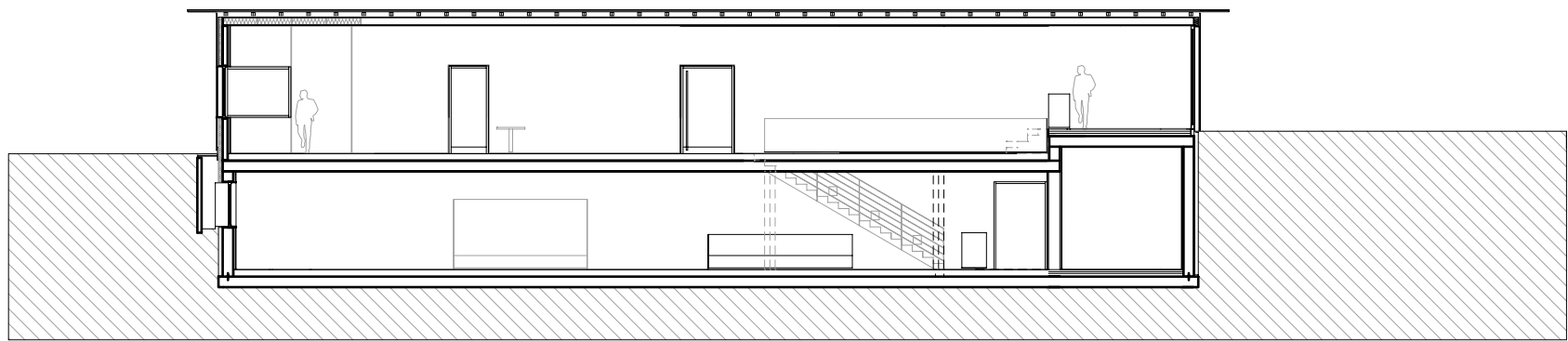
WESTANSICHT



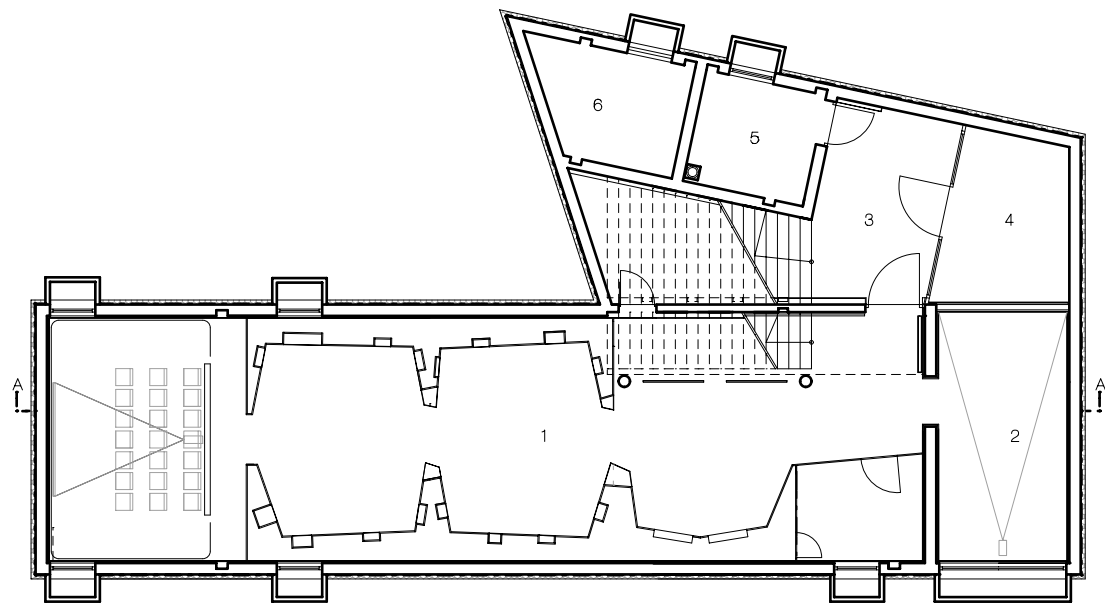
NORDANSICHT



SÜDANSICHT



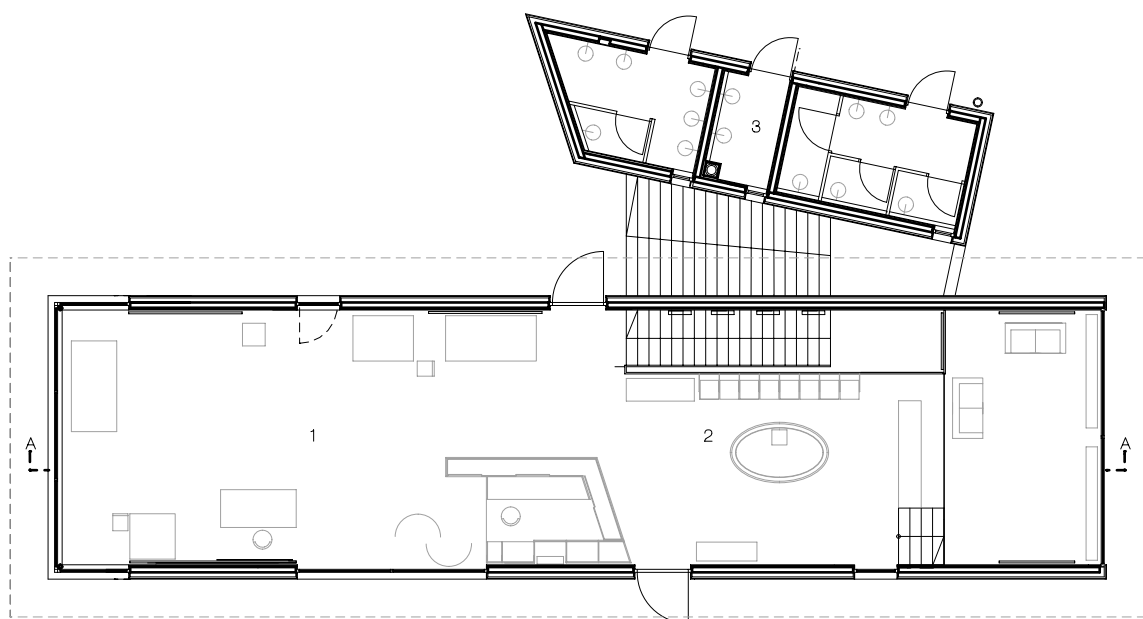
SCHNITT



UNTERGESCHOSS



- 1 AUSSTELLUNG NATURPARK
- 2 VIDEORAUM
- 3 VORRAUM
- 4 AGGREGAT
- 5 HEIZRAUM
- 6 PELLETSRAUM



ERDGESCHOSS

- 1 INFO TOURISMUS/HANDWERK/LANDWIRTSCHAFT
AUSSTELLUNG
- 2 INFO NATURPARK RIESERFERNER
- 3 WC ANLAGE