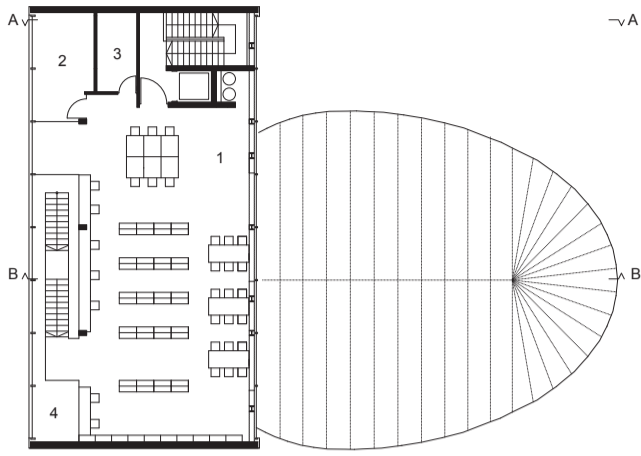
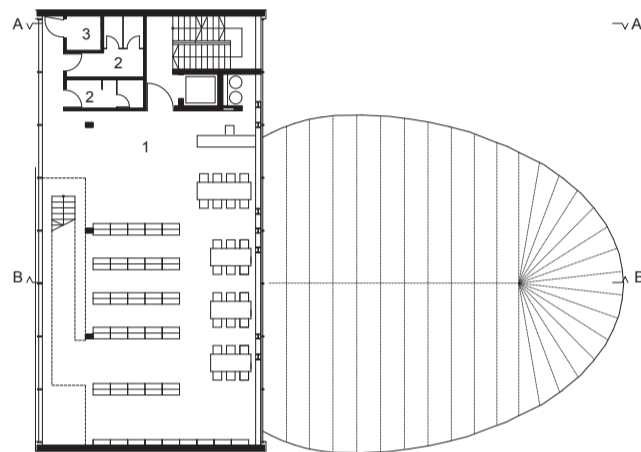
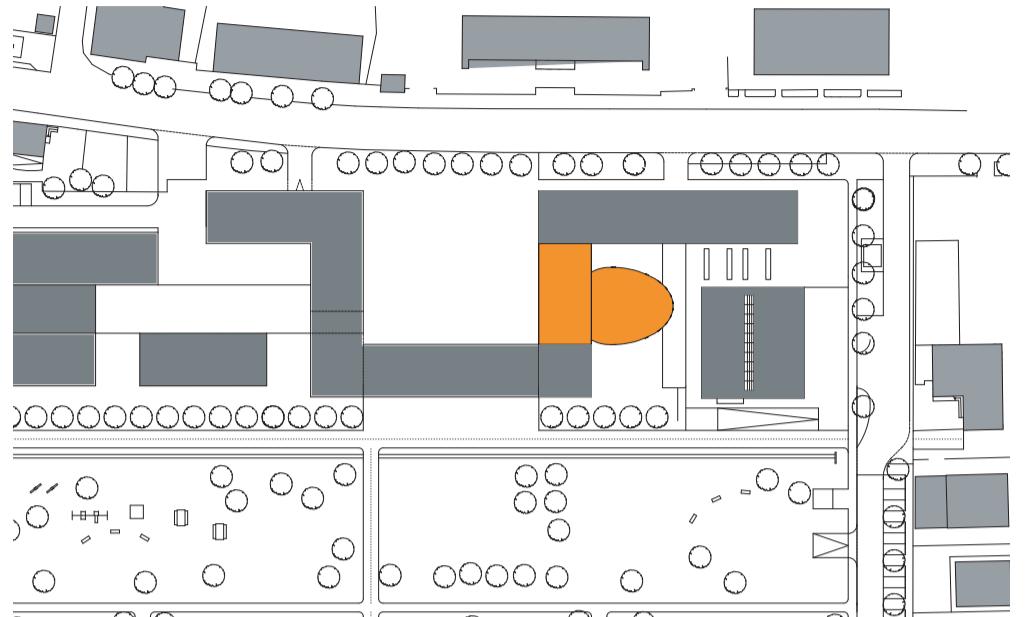


KULTURZENTRUM ZONE ROSENBACH / BOZEN_ARCHITEKT ROLAND BALDI
 CENTRO CULTURALE UNA ROSENBACH / BOLZANO_ARCHITETTO ROLAND BALDI



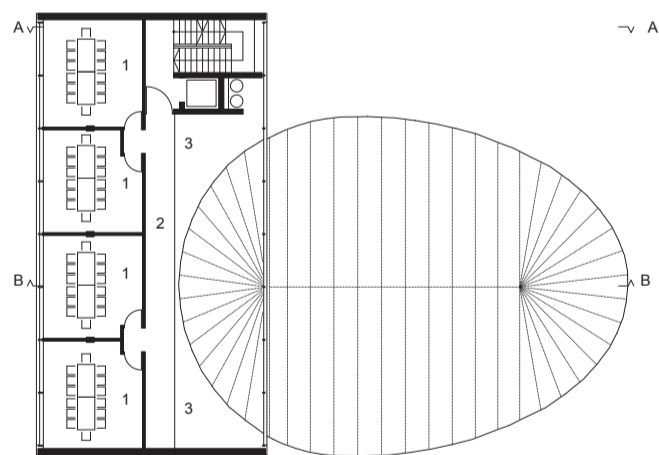
- 1 LESESAAL / SALA LETTURA
- 2 BÜRO / UFFICIO
- 3 LAGER / DEPOSITO
- 4 LUFTRAUM / VUOTO

3. OBERGESCHOSS / 3° PIANO



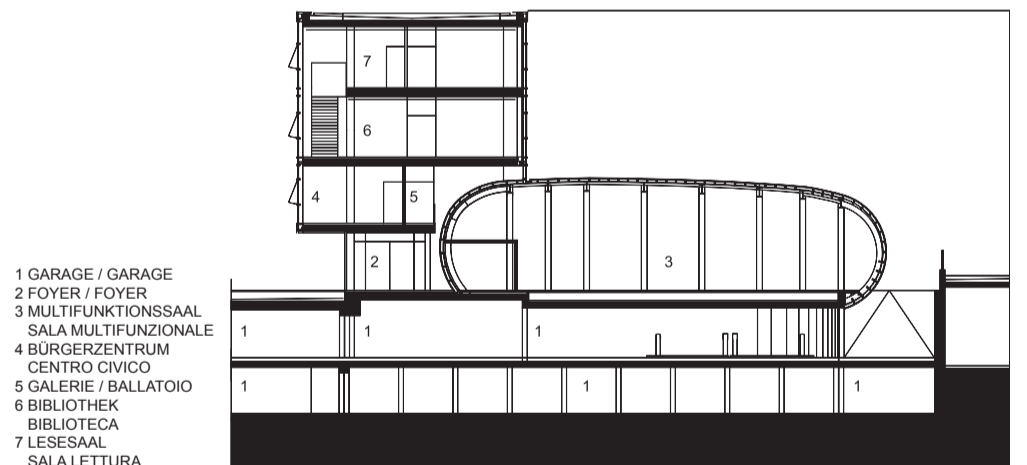
- 1 BIBLIOTHEK / BIBLIOTECA
- 2 WC
- 3 BEHINDERTEN WC
WC HANDICAPPATI

2. OBERGESCHOSS / 2° PIANO



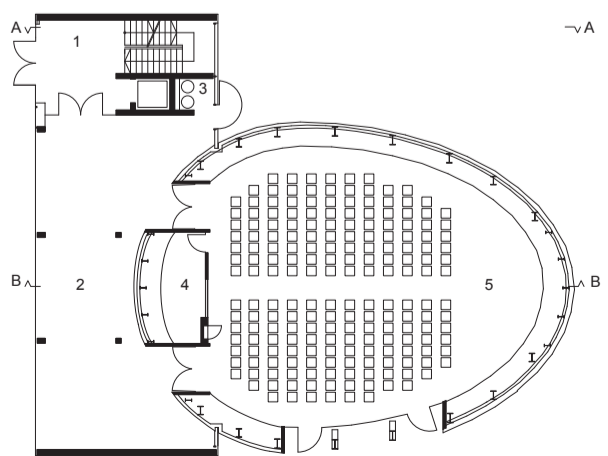
- 1 BÜRGERZENTRUM
CENTRO CIVICO
- 2 GALERIE / BALLATOIO
- 3 LUFTRAUM / VUOTO

1. OBERGESCHOSS / 1° PIANO



- 1 GARAGE / GARAGE
- 2 FOYER / FOYER
- 3 MULTIFUNKTIONSSAAL
SALA MULTIFUNZIONALE
- 4 BÜRGERZENTRUM
CENTRO CIVICO
- 5 GALERIE / BALLATOIO
- 6 BIBLIOTHEK
BIBLIOTECA
- 7 LESESAAL
SALA LETTURA

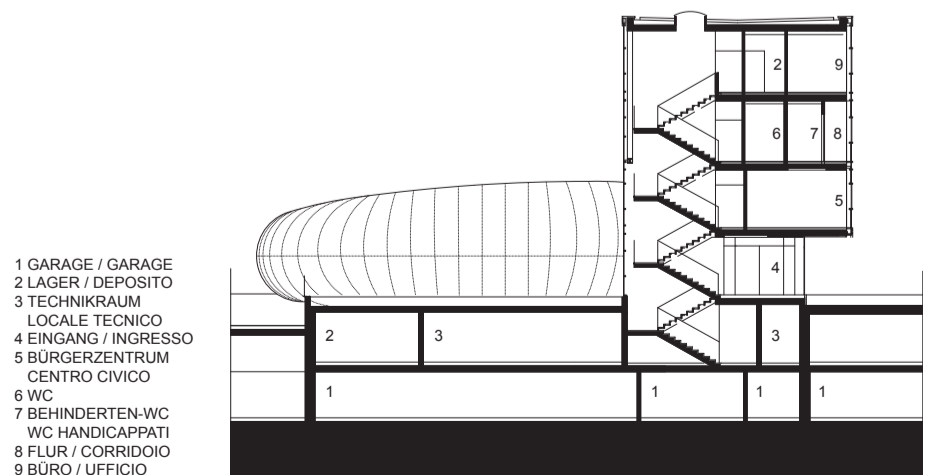
SCHNITT B-B / SEZIONE B-B



- 1 EINGANG / INGRESSO
- 2 FOYER / FOYER
- 3 GARDEROBE / GUARDEROBA
- 4 REGIERAUM / VANO REGIA
- 5 MULTIFUNKTIONSRaum
SALA MULTIFUNZIONALE

ERDGESCHOSS / PIANO TERRA

0 10



- 1 GARAGE / GARAGE
- 2 LAGER / DEPOSITO
- 3 TECHNIKRAUM
LOCALE TECNICO
- 4 EINGANG / INGRESSO
- 5 BÜRGERZENTRUM
CENTRO CIVICO
- 6 WC
- 7 BEHINDERTEN-WC
WC HANDICAPPATI
- 8 FLUR / CORRIDOIO
- 9 BÜRO / UFFICIO

SCHNITT A-A / SEZIONE A-A