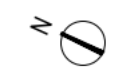
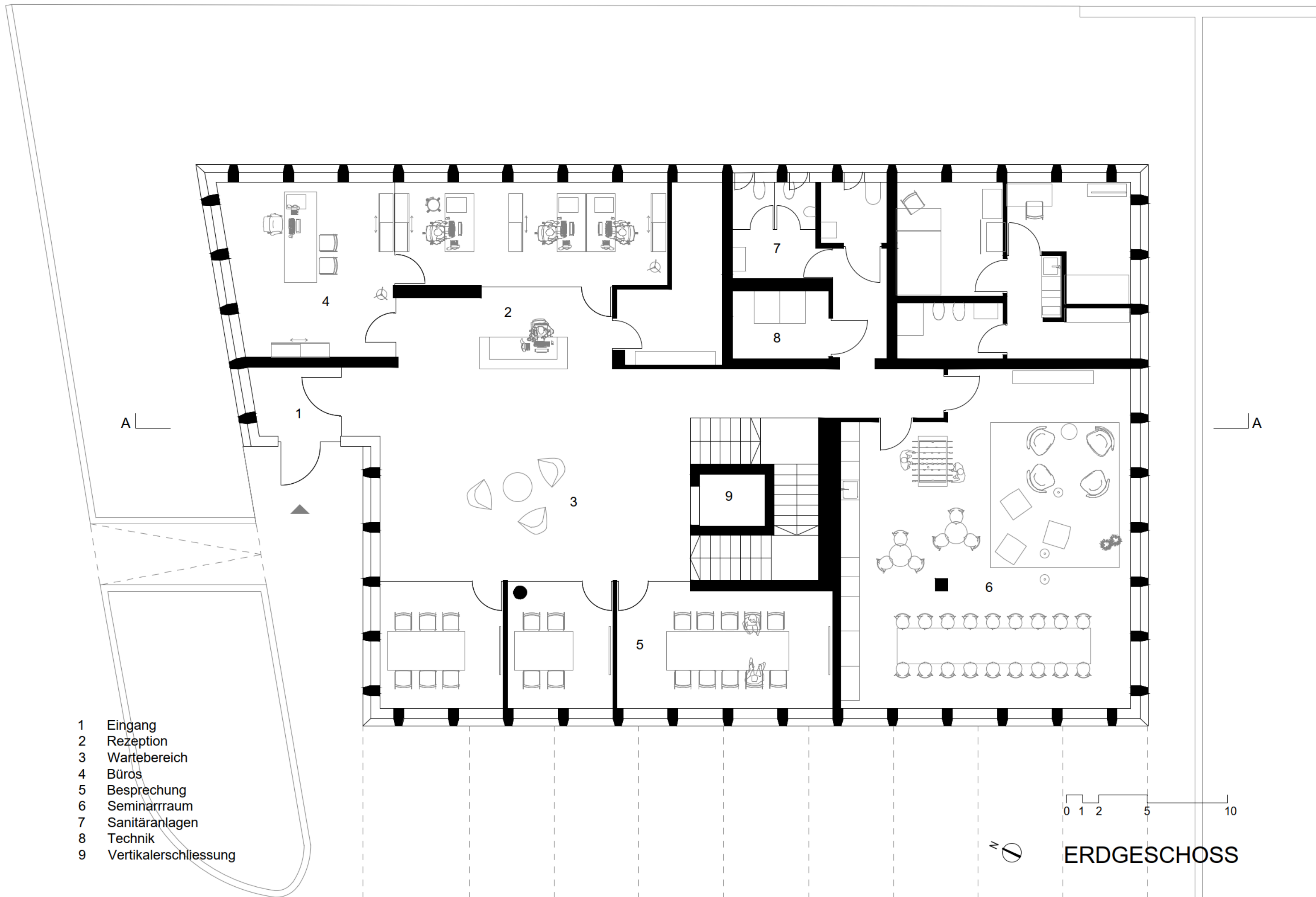


0 1 2 5 10



LAGEPLAN

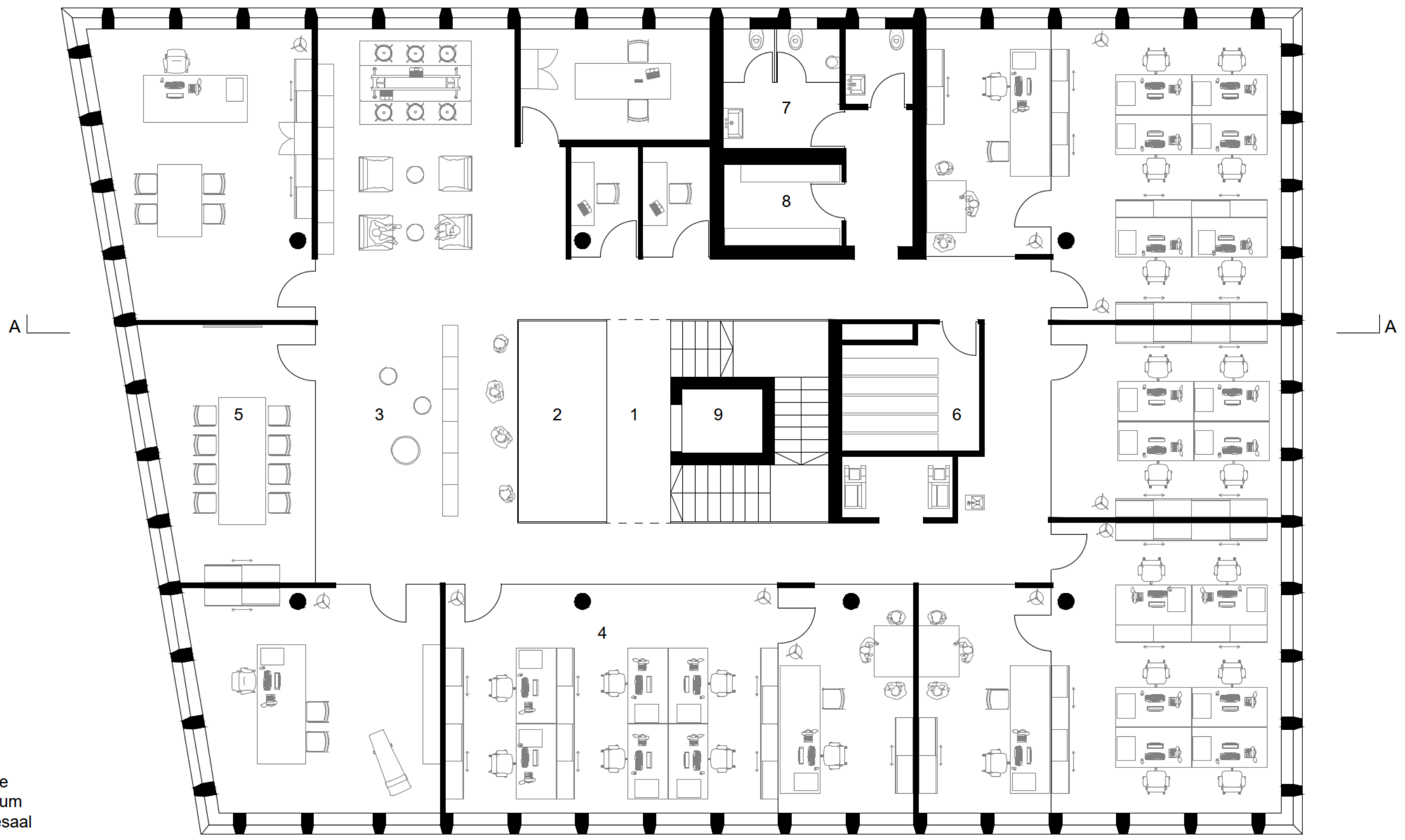


- 1 Eingang
- 2 Rezeption
- 3 Wartebereich
- 4 Büros
- 5 Besprechung
- 6 Seminarraum
- 7 Sanitäranlagen
- 8 Technik
- 9 Vertikalerschliessung

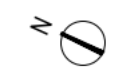
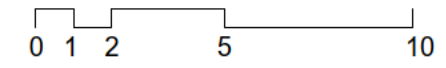
0 1 2 5 10



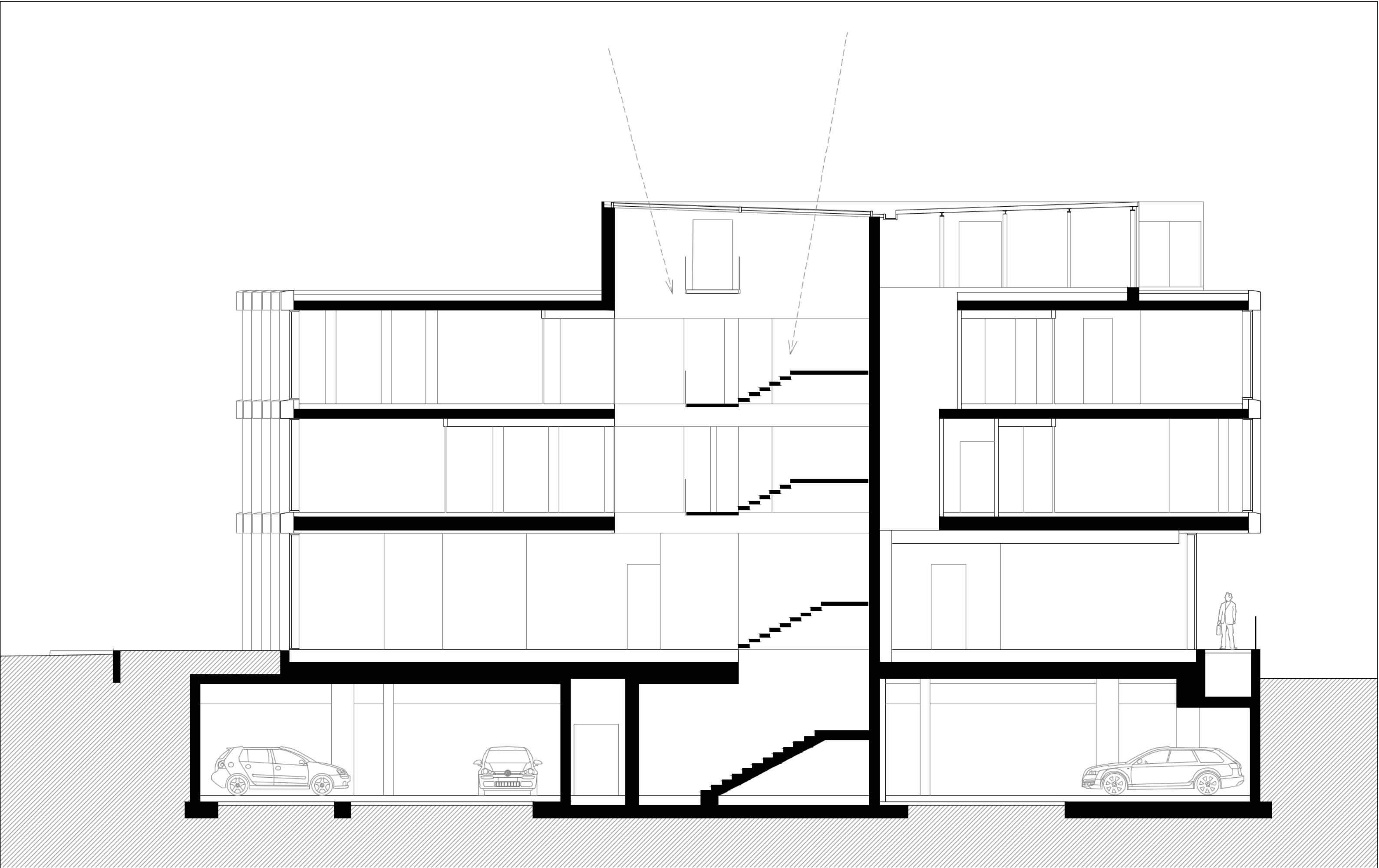
ERDGESCHOSS



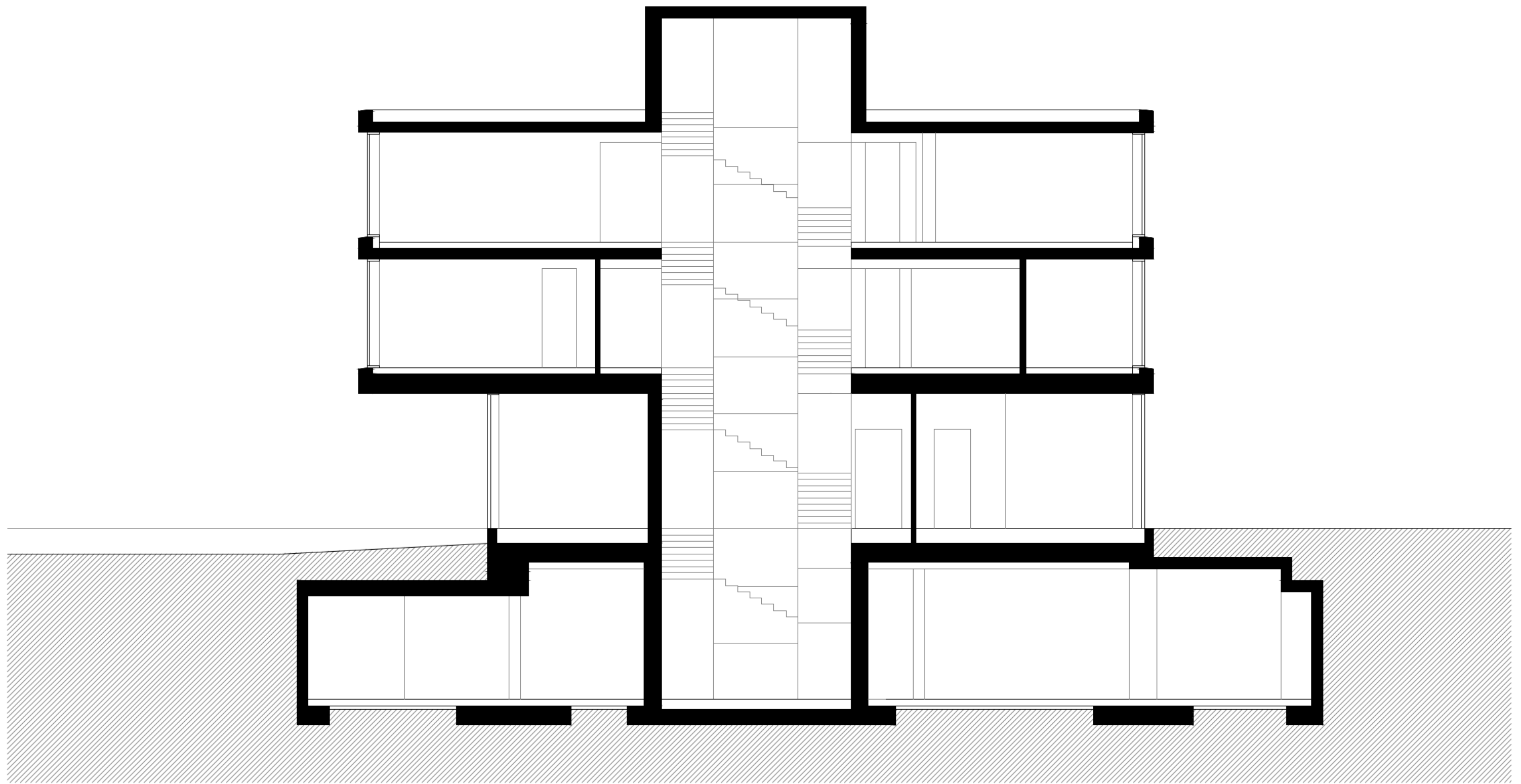
- 1 Brücke
- 2 Luftraum
- 3 Wartesaal
- 4 Büros
- 5 Besprechung
- 6 Archiv
- 7 Sanitäranlagen
- 8 Technik
- 9 Vertikalerschliessung



1.OBERGESCHOSS



SCHNITT A-A



SCHNITT B-B