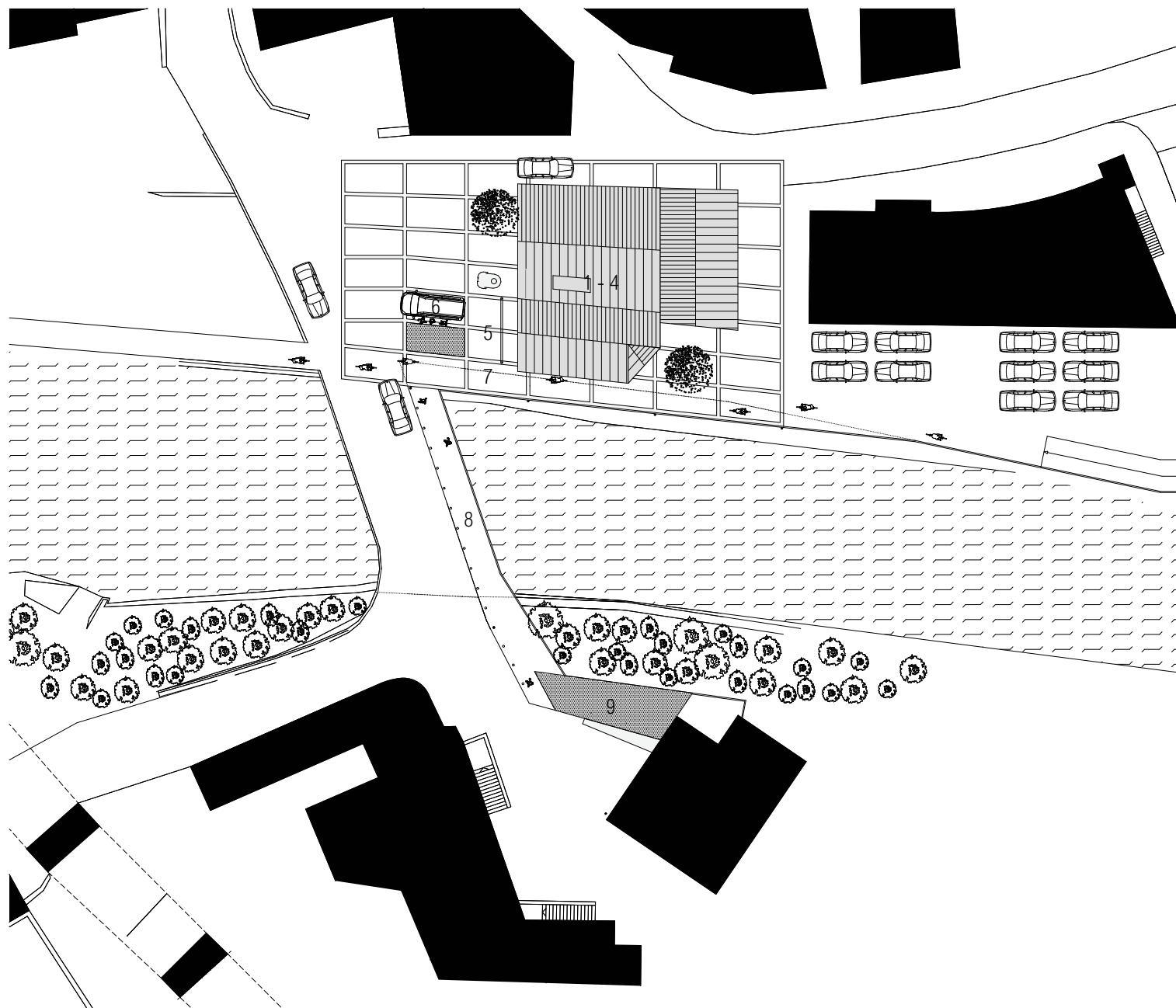
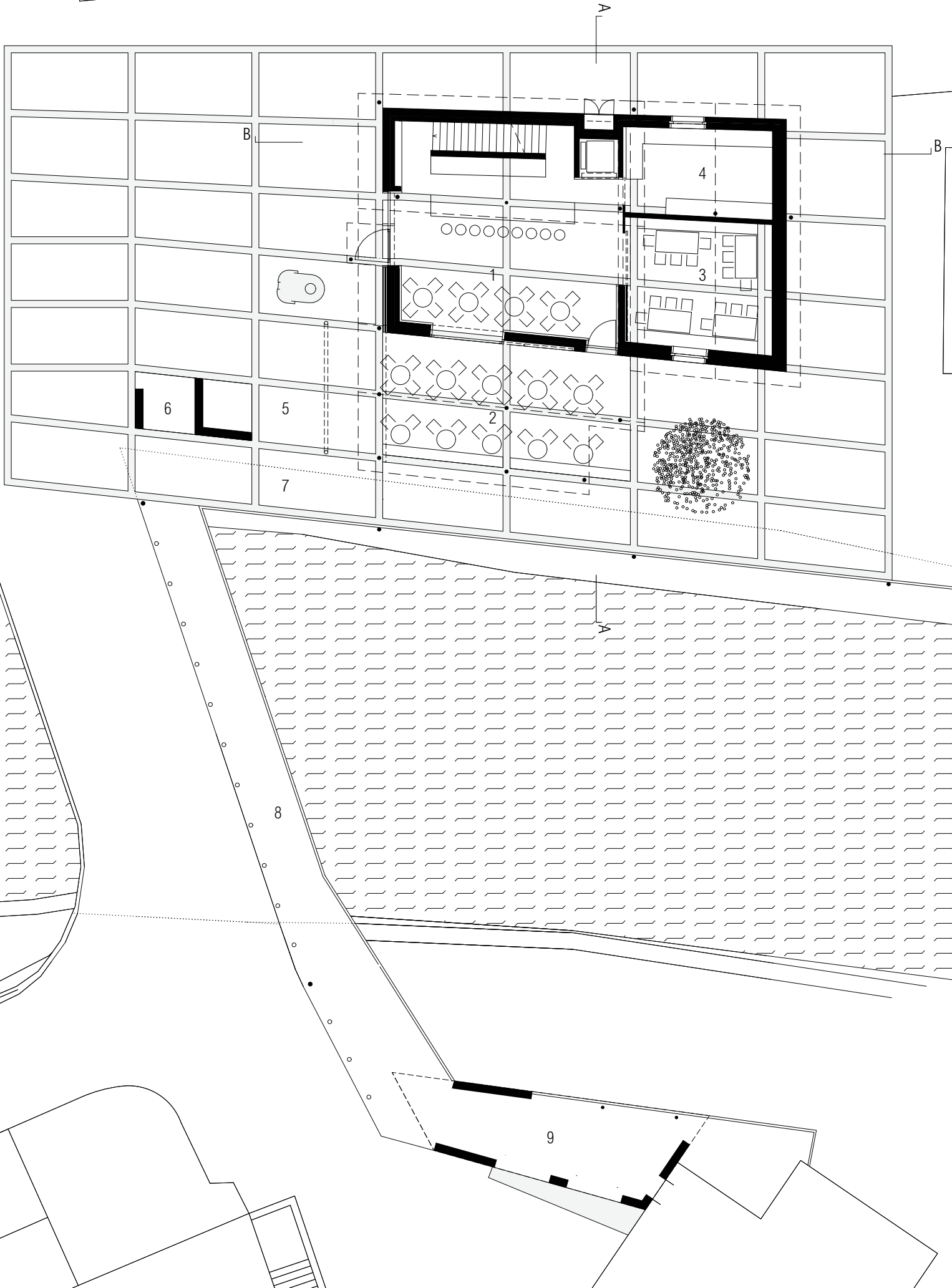


# Lageplan

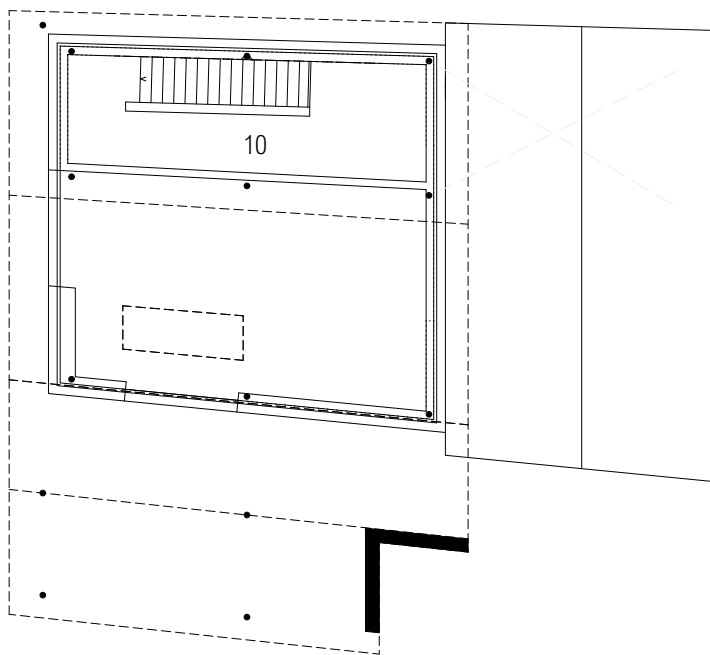
- 1 Bar/Restaurant
- 2 Terrasse
- 3 Stube
- 4 Küche
- 5 Fahrräder
- 6 Bushaltestelle
- 7 Fahrradweg
- 8 Fussgängerbrücke
- 9 Ausstellungsbereich
- 10 Göflaner Marmor
- 11 Empore
- 12 Vorbereitung
- 13 Technik
- 14 Lager
- 15 Sanitäräume
- 16 Heizung
- 17 Garage



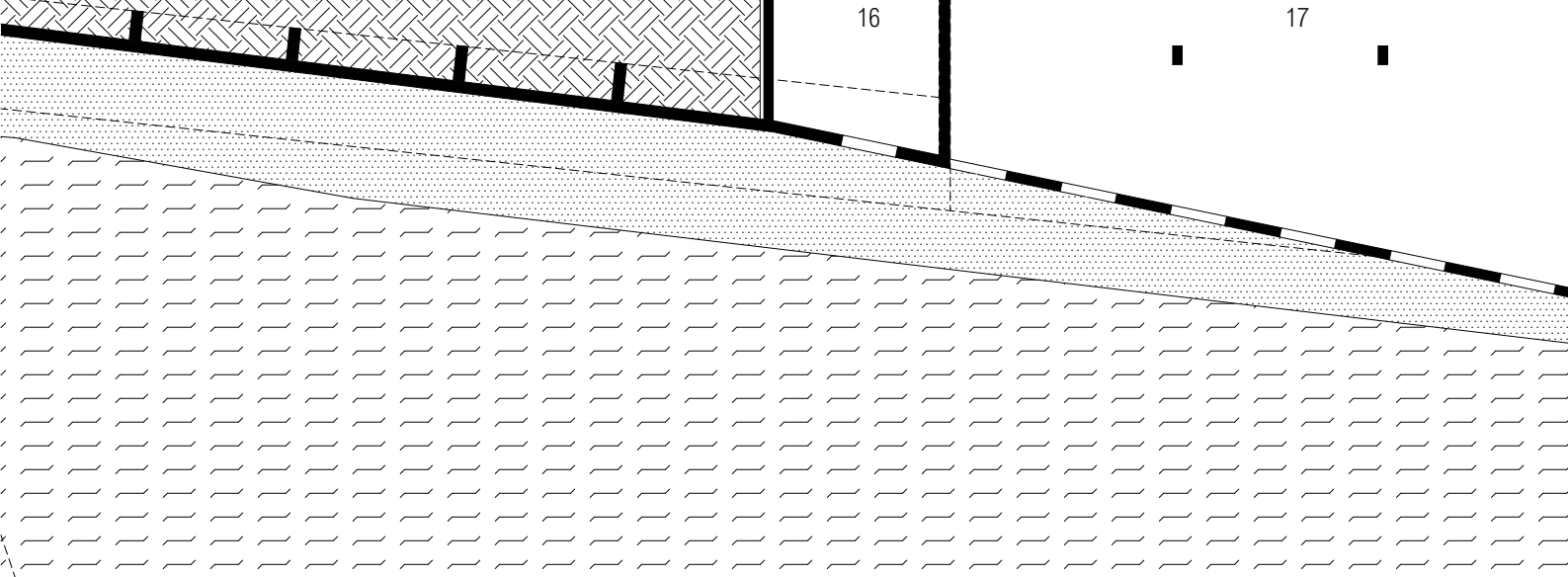
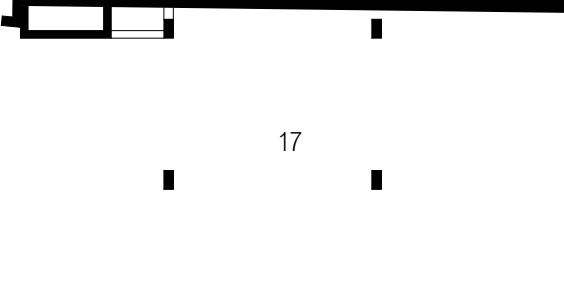
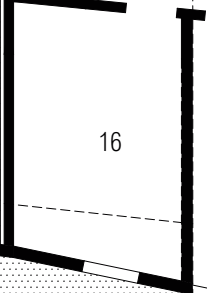
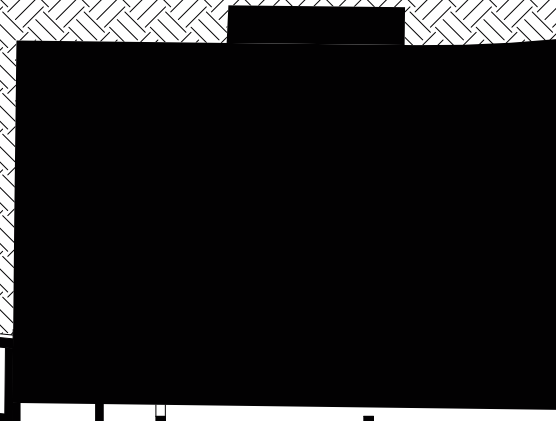
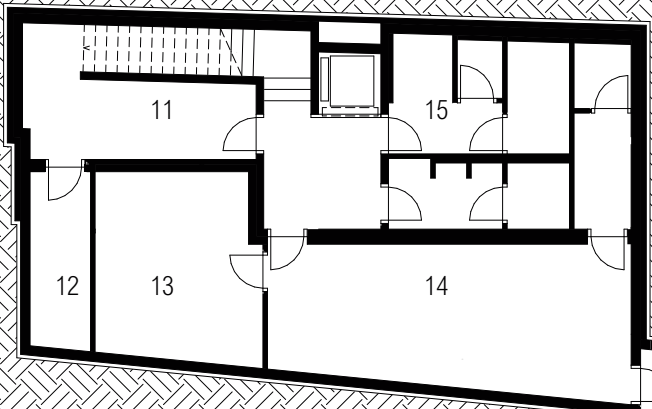
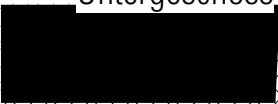
Erdgeschoss



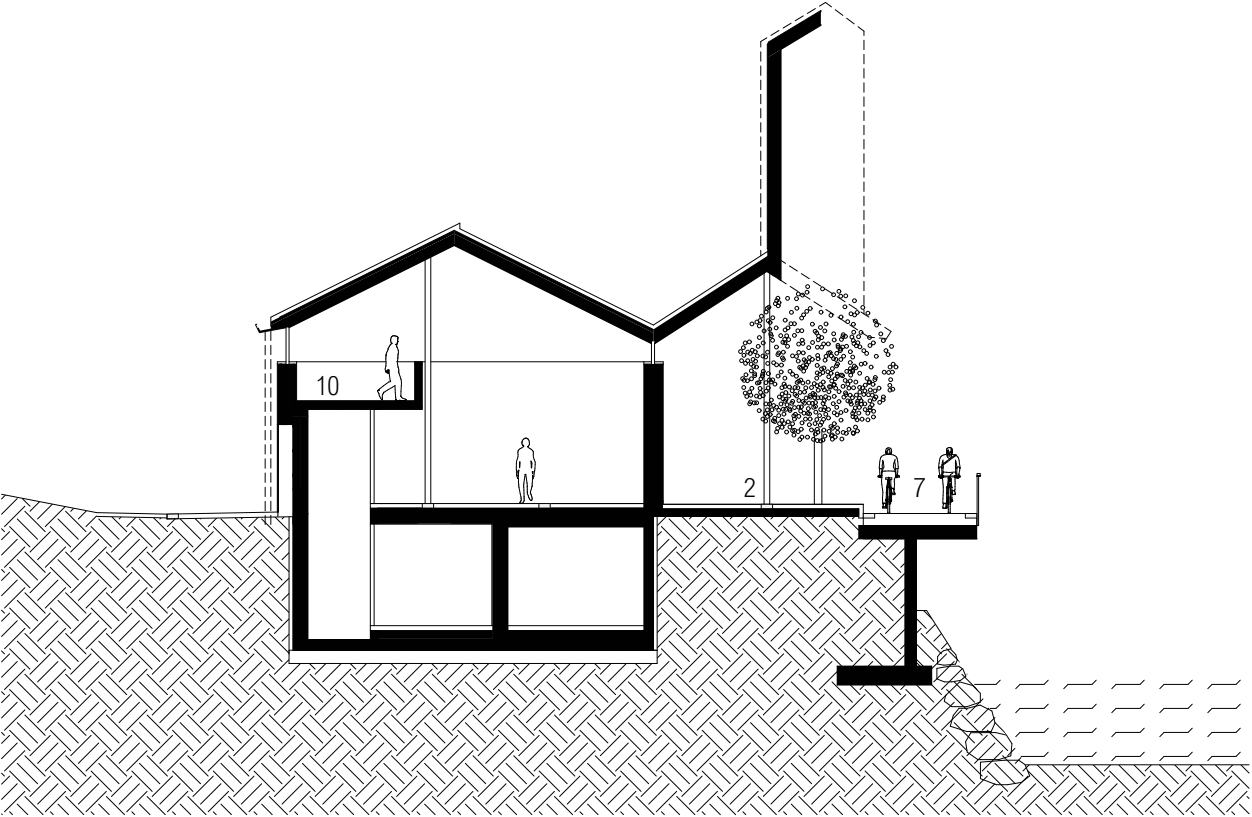
# Obergeschoss



Untergeschoss



Schnitt A-A



Schnitt B-B

