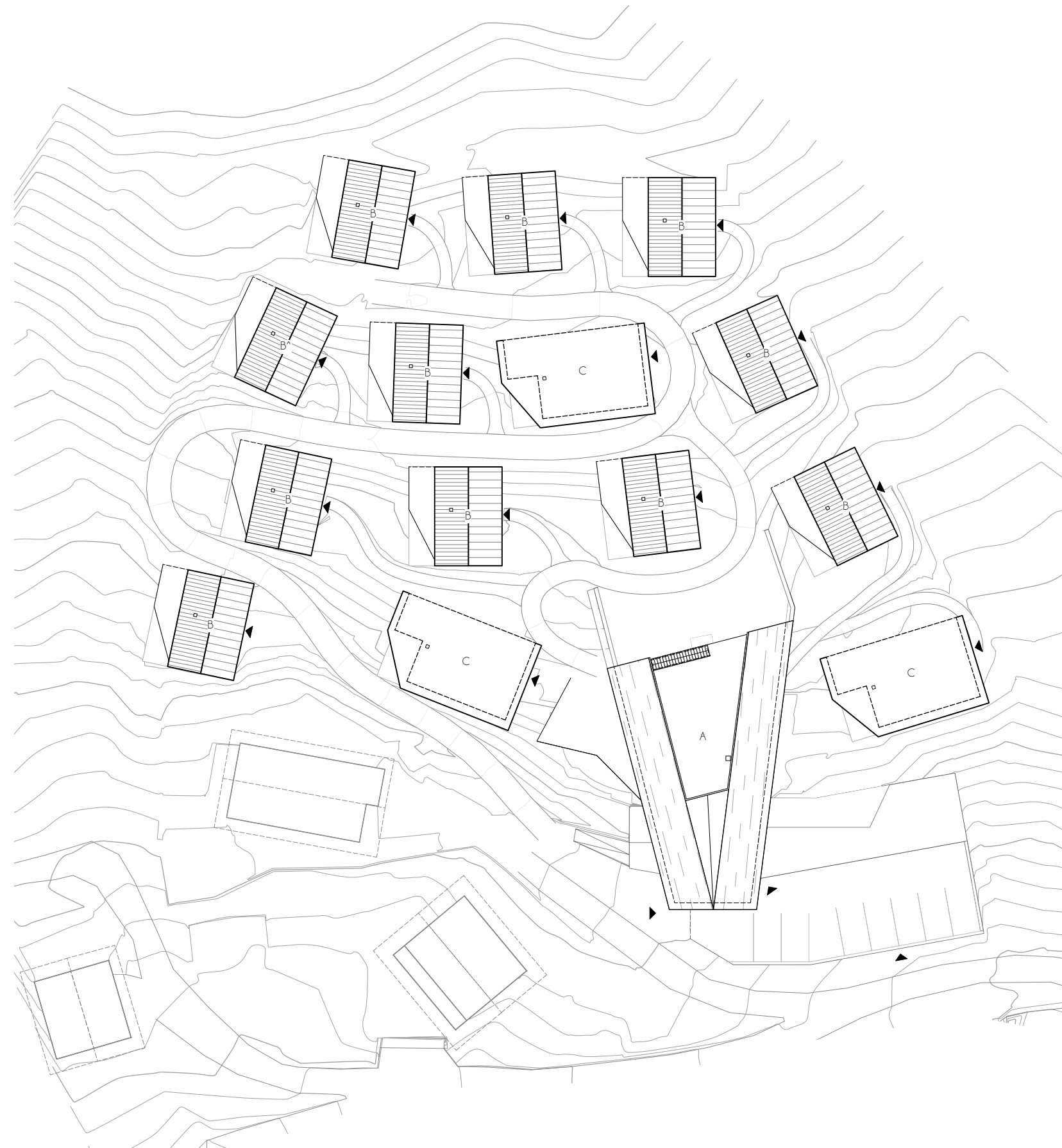


ÜBERSICHT

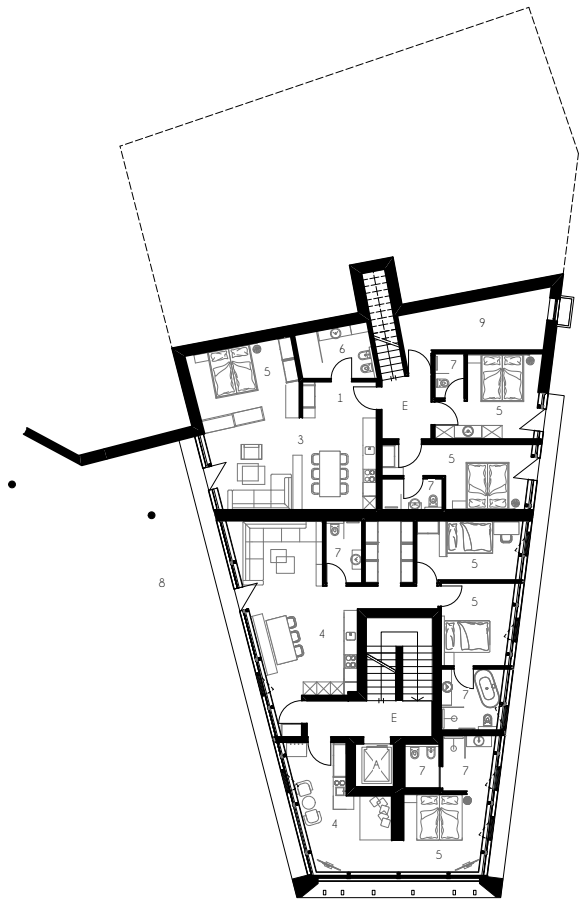


LAGEPLAN

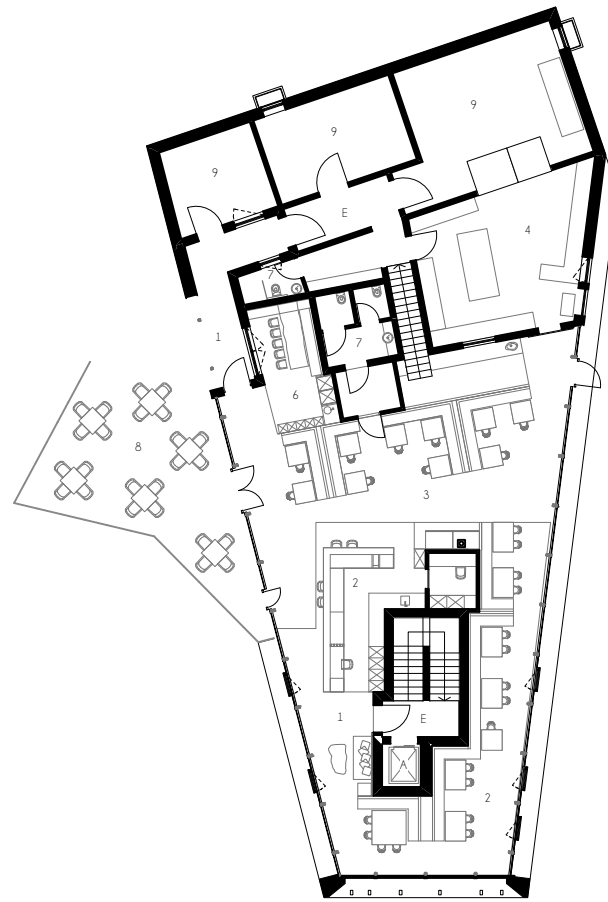
- A HAUPTHAUS
- B TRADITIONS-CHALET
- C LANDSCHAFTS-CHALET



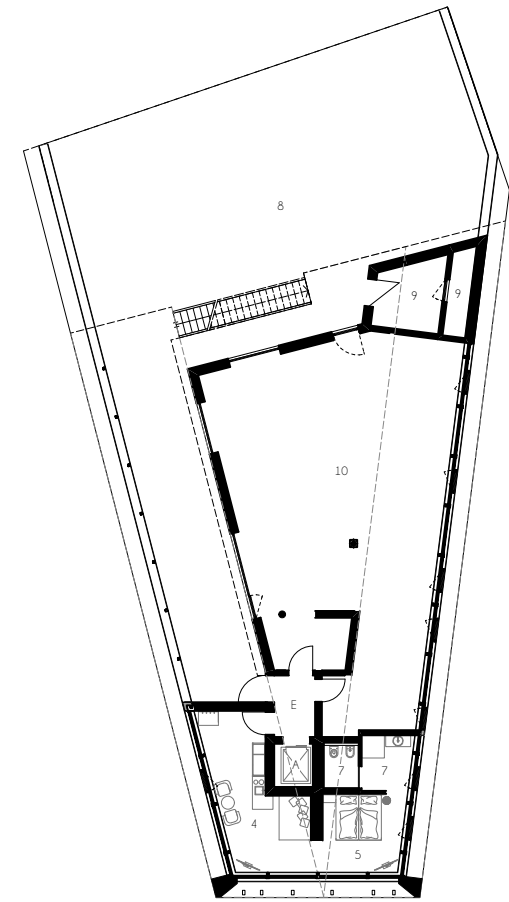
HAUPTHAUS



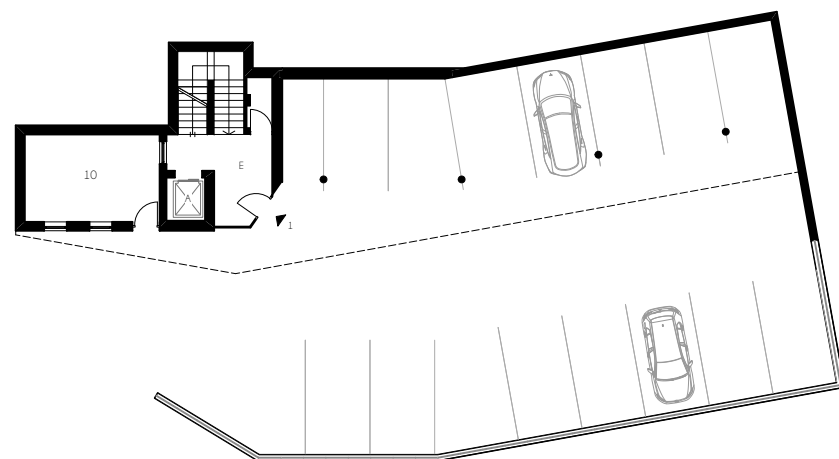
1. UNTERGESCHOSS



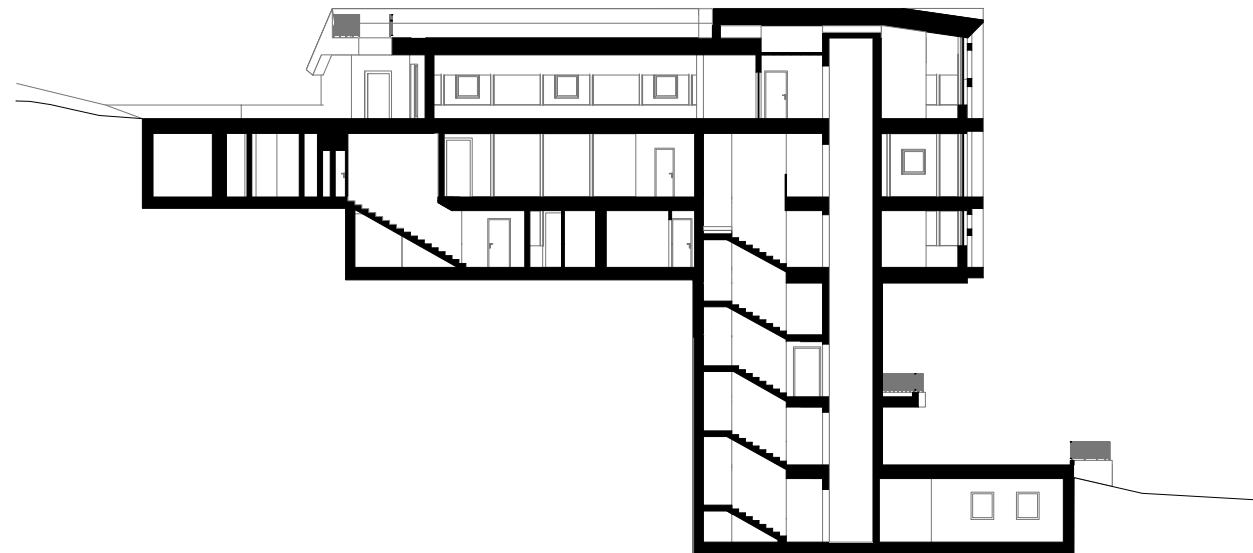
ERDGESCHOSS



OBERGESCHOSS

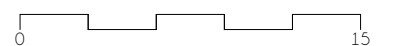


3. UNTERGESCHOSS

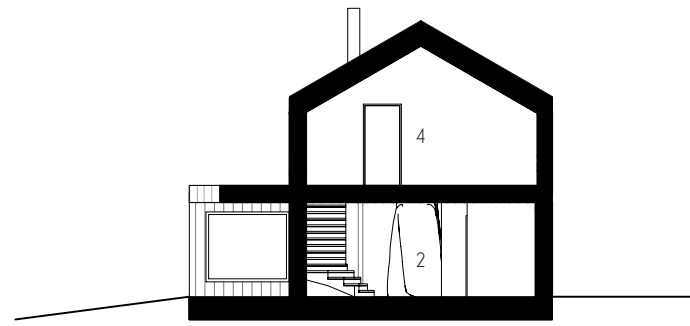


SCHNITT

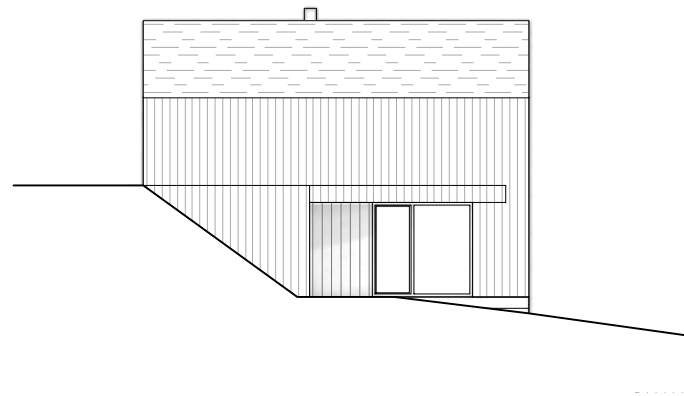
- 1 EINGANG
- 2 BAR
- 3 RESTAURANT
- 4 KÜCHE
- 5 ZIMMER
- 6 VINOHEK
- 7 BAD/WC
- 8 TERRASSE
- 9 TECHNIK
- 10 LAGER
- A AUFZUG
- E ERSCHLISSUNG



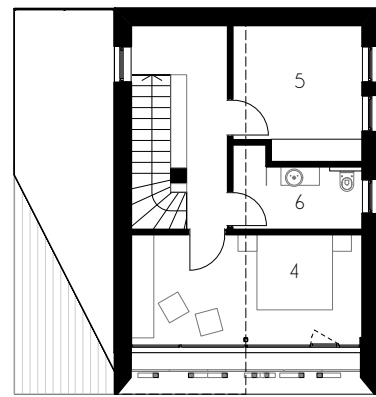
TRADITIONS-CHALET



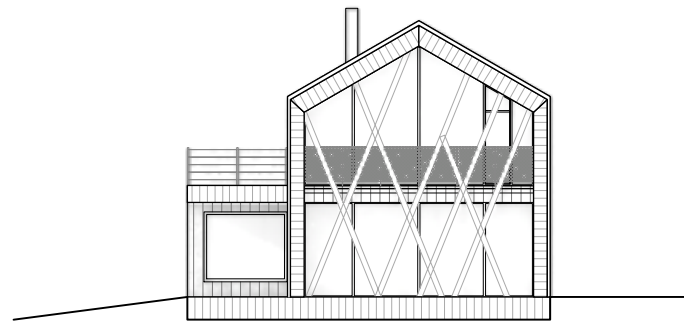
SCHNITT



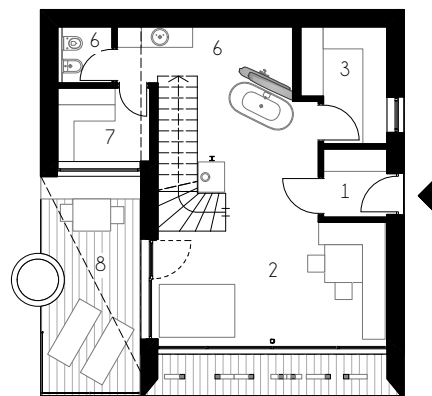
ANSICHT



OBERGESCHOSS

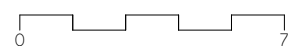


ANSICHT

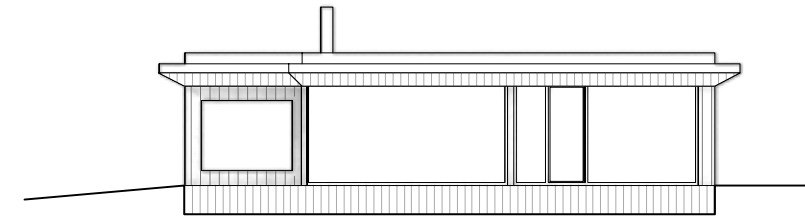


ERDGESCHOSS

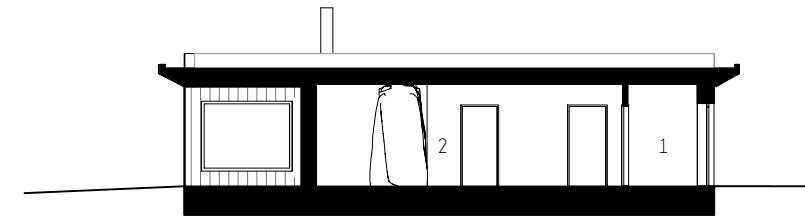
- 1 EINGANG
- 2 WOHNRAUM
- 3 KÜCHE
- 4 ZIMMER
- 5 ENTSPANNUNGSRAUM
- 6 BAD/WC
- 7 SAUNA
- 8 TERRASSE



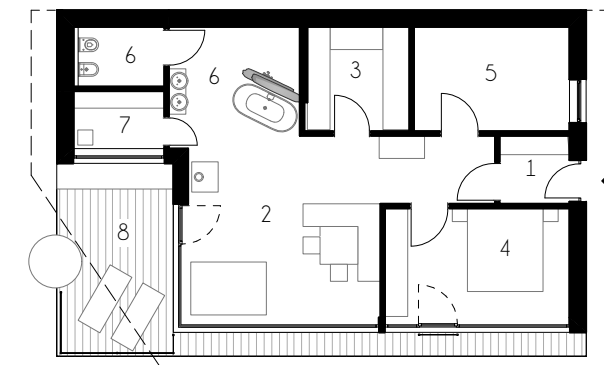
LANDSCHAFTS-CHALET



ANSICHT



SCHNITT



ERDGESCHOSS

- 1 EINGANG
- 2 WOHNRAUM
- 3 KÜCHE
- 4 ZIMMER
- 5 ENTSPANNUNGSRAUM
- 6 BAD/WC
- 7 SAUNA
- 8 TERRASSE



